

MERCER



COMPANY

FOR LEASE

AVAILABLE: 2,110 SQUARE FEET

2100 N HWY 360 #1601-1602, GRAND PRAIRIE, TX 75050

PROPERTY FEATURES

- ✓ Total SF: 2,110
- ✓ 14' Clear Height
- ✓ 2 Grade Level Doors
- ✓ 3 Private Offices
- ✓ 2 Open Workspaces
- ✓ 2 Restrooms

CORBY HODGKISS, SIOR

Executive Vice President

469-360-3918

chodgkiss@mercerc-company.com

NICK FULTON

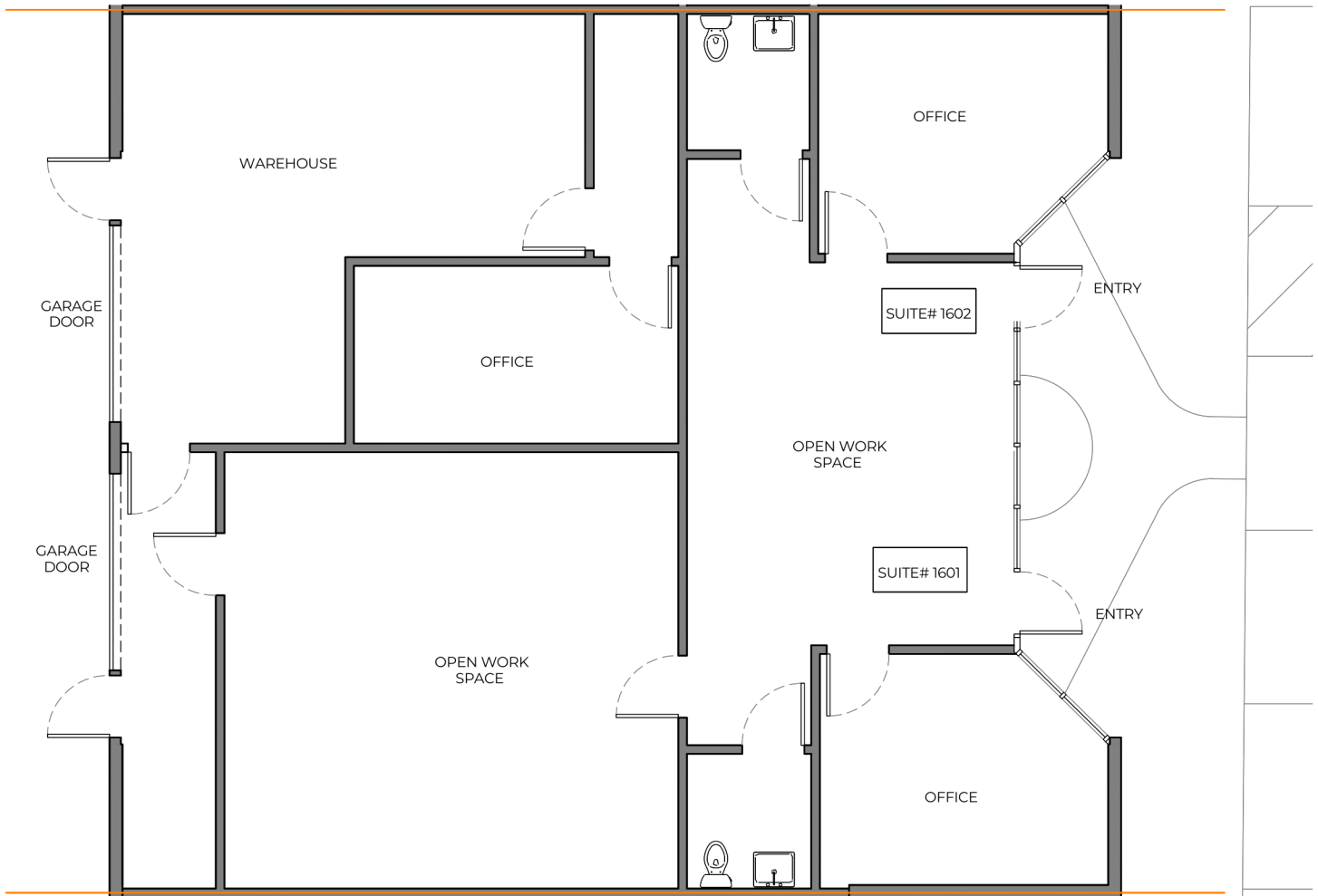
Market Director

469-616-8783

nfulton@mercerc-company.com

AVAILABLE: 2,110 SQUARE FEET

2100 N HWY 360 #1601-1602, GRAND PRAIRIE, TX 75050



CORBY HODGKISS, SIOR

Executive Vice President
469-360-3918



NICK FULTON

Market Director
469-616-8783

The information contained herein has been given to us by the owner of the property or other sources we deem reliable. We have no reason to doubt its accuracy, but we do not guarantee it. All information should be verified before purchase or lease.